

A vision on the Kloof, the new waterfront of Kampen

KOM PASS
COMPASS

BACKGROUND

Because of the construction of the Hanzelijn and the new station Kampen Zuid, the connection of the N50 to Kampen has been redesigned. In respect to Ruimte voor de rivier, the Reevediep as high-water channel in the south of Kampen will connect the IJssel to the Drontermeer.

West of the N50 is the Zwartendijk, a cultural-historical valuable dyke with a characteristic mound building. As a result of the construction of Reevediep and the village Reeve, the Zwartendijk will transform into an interesting open urban agricultural area with matching functions such as care farming, a tearoom, pure and sustainable products etc.

Directly parallel to the N50 a congress centre is being developed and in the corner of Reevediep will be an information centre for the integral development of the area. East of the Hanzelijn is the residential area Onderdijks and the new station. Because of the Reevediep, Kampen is assigned a new front and because of the N50 and the Hanzelijn a new entrance is created. Going into Kampen, you can see Reevediep, the village De Reeve, the station and the residential area Onderdijks from the train or your car.

During the reconstruction of the N50, N764, and the Hanzelijn a cluster of residual spaces was created, called shards in the Kloof by the municipal. Kampen would like to improve the spatial quality of this new gate and has asked three designers to formulate their visions. The municipal is supported in this project by the county Overijssel (Actieprogramma Cultuur en Ruimte).



De Jong Luchtfotografie

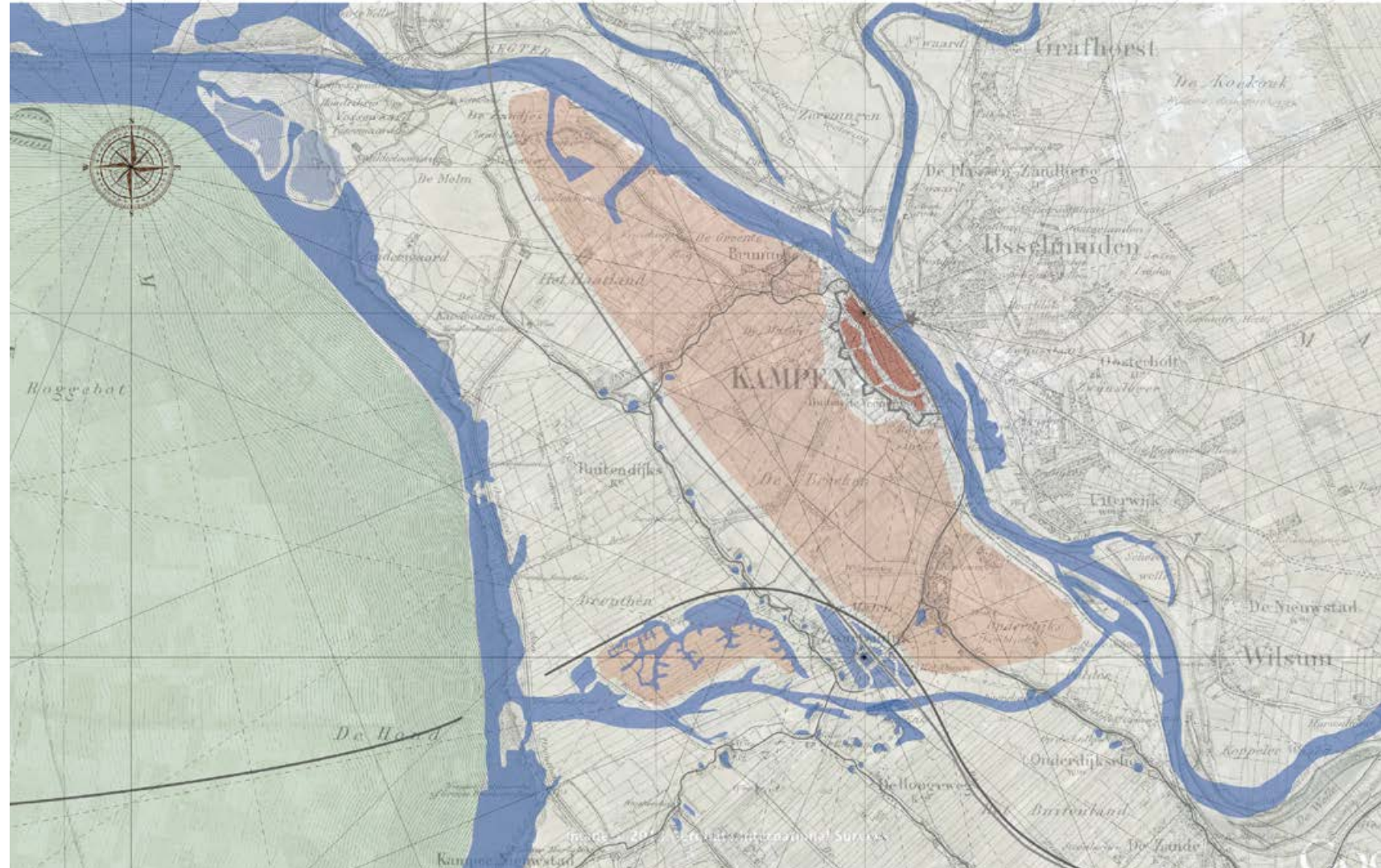
LOCALISATION

After the redesign of the infrastructure various spaces have become locked in this traffic tissue as unreachable and orphaned shards. The Kloof, on the level of the city and the landscape, is no longer a representative of the important entrance into the city.

We want to bring these different shards together under one denominator and the best way to do this is to introduce water as a combining force. The traffic tissue no longer separates the Kloof into different pieces, but becomes a unifying framework that seems to have been thrown over a continuous surface of water. This causes the situation to become the monumentality that lives up to the scale of the city and the landscape. The Kloof transforms into a representable entrance of the city Kampen, a new waterfront with the station as a prominent orientation point.

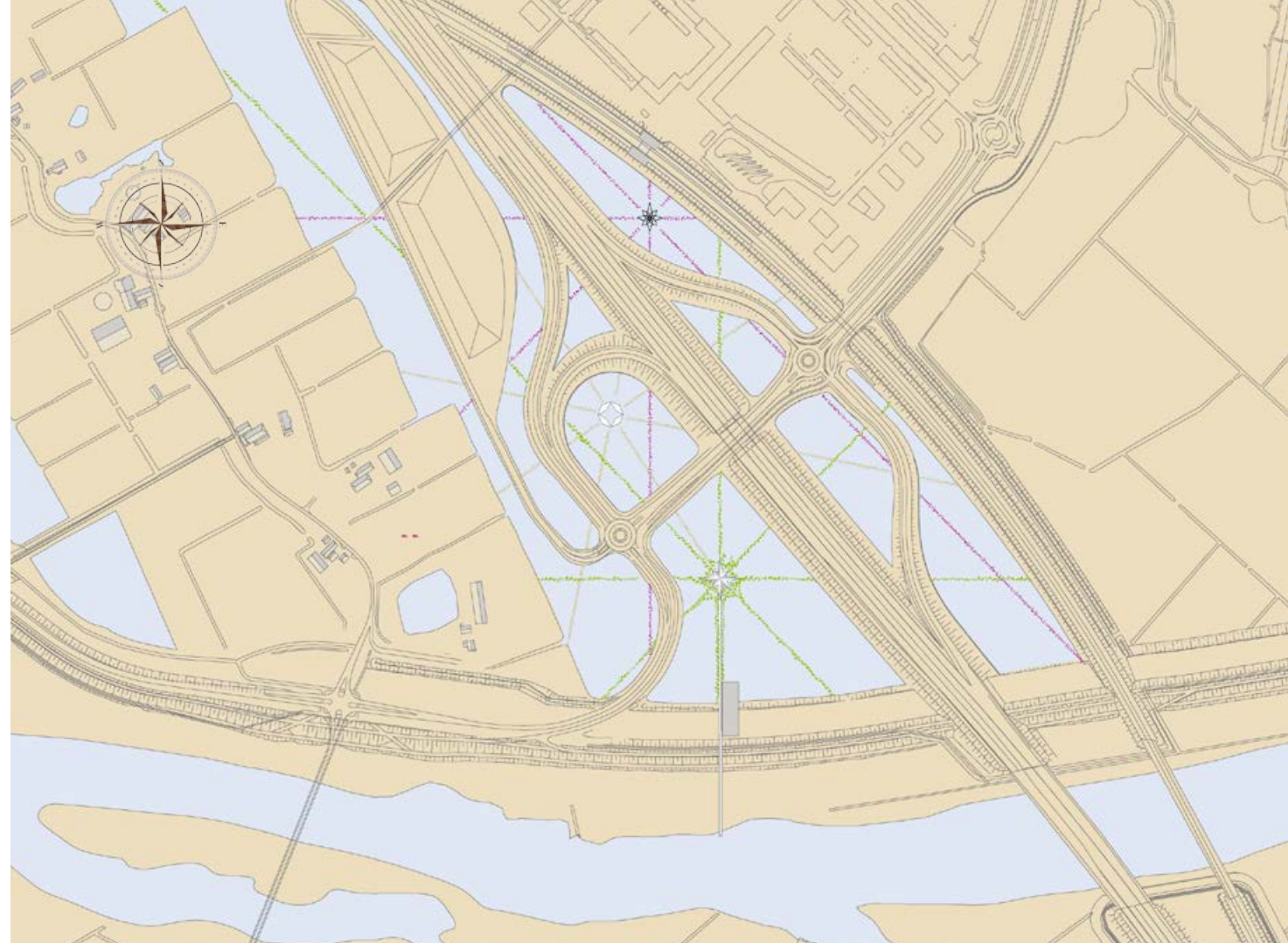
Locked in between the water-rich areas in the Kloof, De Reeve, and the Reevediep, the Zwartendijk presents itself very recognisably as a green ridge in a blue landscape.

From Hanzestad, ships sailed via the IJsselmonding and Southern Sea to the North Sea and East Sea. Localisation was done with the aid of a compass and ingenious sea maps with compass roses and orientation lines. The new entrance is now the place from which we venture into the outside world. We want to connect this new waterfront, with the help of this centuries old method of localisation, with the historical waterfront along the IJsselkade in the historical centre of Kampen.



THREE COMPASS ROSES

The new entryway to Kampen sees the combining of three different methods of transportation. We want to introduce a compass rose for each of these three; one for the railway passenger, one for the car driver, and one for recreational users. The orientation lines that are drawn from the compass roses are each made visible individually with a variety of vegetation. This way a fascinating linear pattern has the chance to be formed in both space and time (seasons).





The compass rose near the station floats like a line drawing on the water. The crystalline composition of water surfaces causes, together with the wind, a fascinating spectacle of ripples. It is a changing image that will surprise the rail passenger time and again.

The orientation lines for this compass rose are marked by thin purple-blue loosestrife.



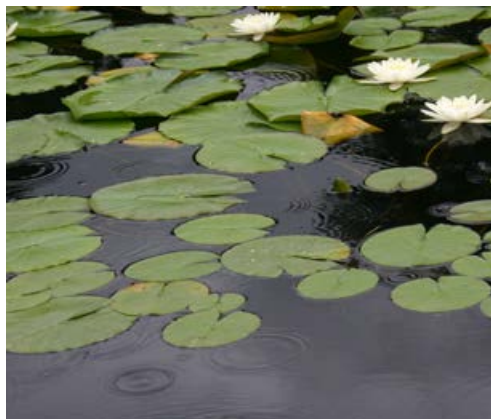
THE RAIL PASSENGER



The compass rose in the extension is like a mysterious ruin in the middle of the water. It is a water catcher made of robust concrete. Rainwater collects in the heart and rises or falls depending how much it is raining. Heavy rain can even cause it to flood. The water levels are like graphical lines on the concrete. On average, the waterline will draw a star on the concrete, after a dry spell a mysterious hole will appear in the water. The orientation lines are made up of long, sharp radial of yellow irises.

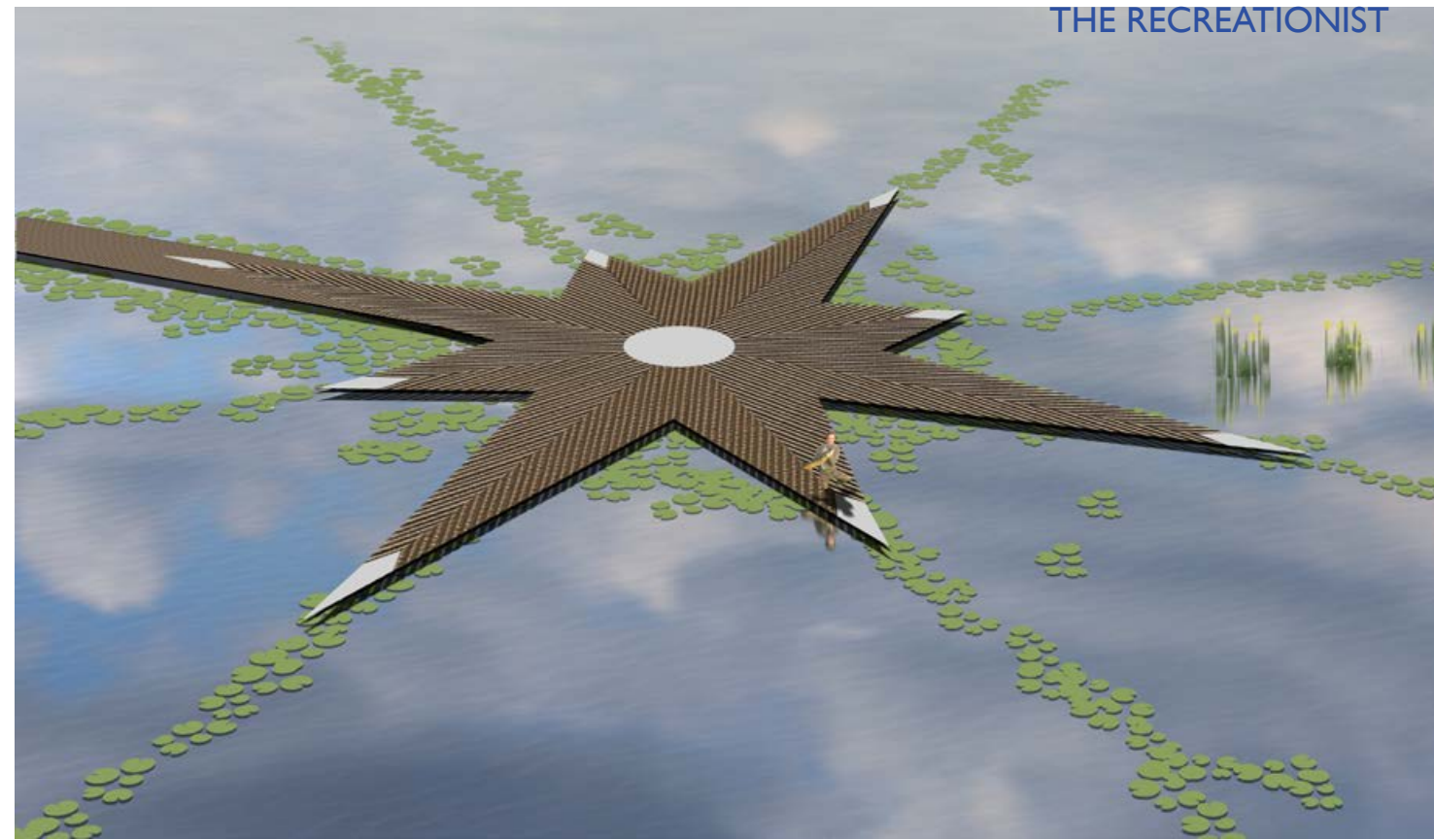
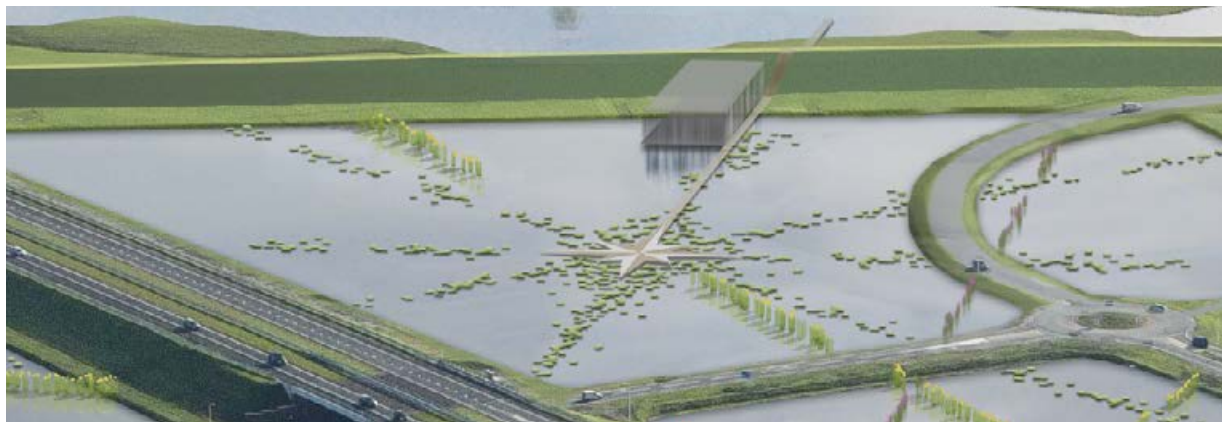


THE DRIVER



The compass rose near the information pavilion is a floating duckboard in a lily pond. It is also an information carrier. This compass rose is connected to the information pavilion and the Reevediep. Visitors are now able to experience the difference between water levels between the inside and outside of the dyke and high and low tide.

In the northern direction in respect to the compass rose is a stronghold on the corner of IJsselkade-Buitenkade in the historical centre of Kampen. Therefore, we would like to propose a fourth compass rose, a table as recreational area with references to the most important Hanzecities.





KOMPAS
KOMPASSI
KOMPASSES
КОМПАС
COMPASS
KOMPASS

